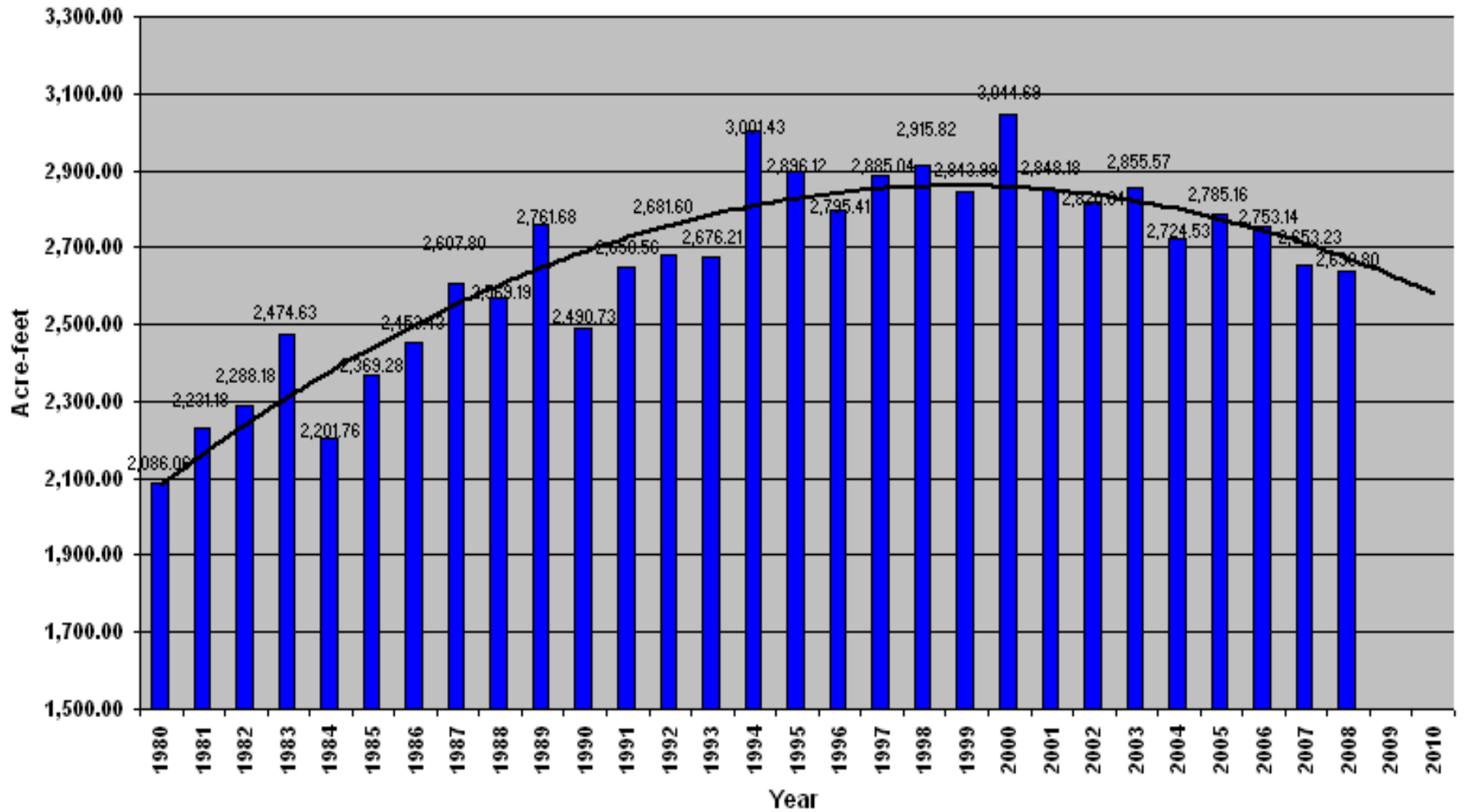


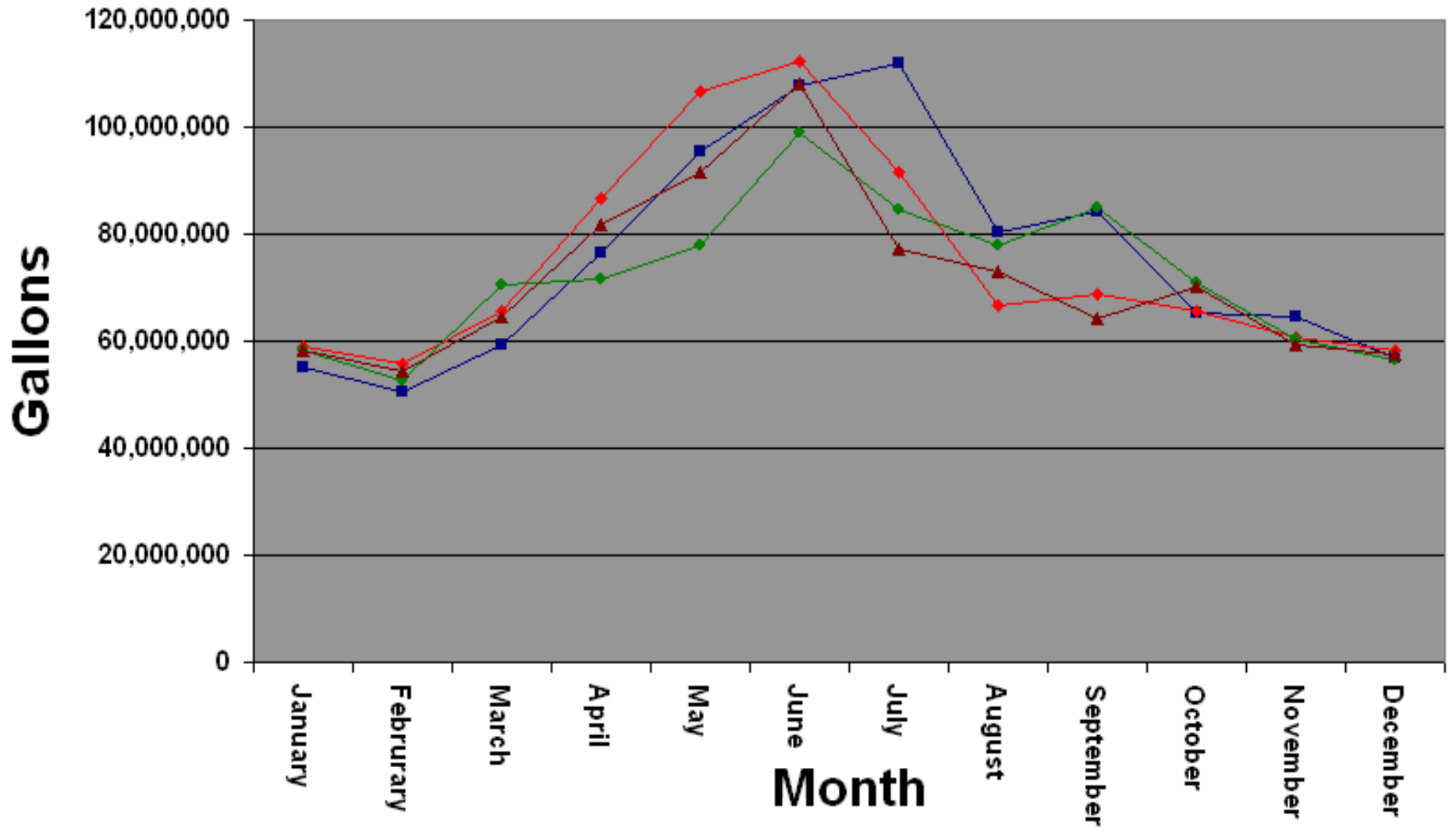
Annual Water Production Totals



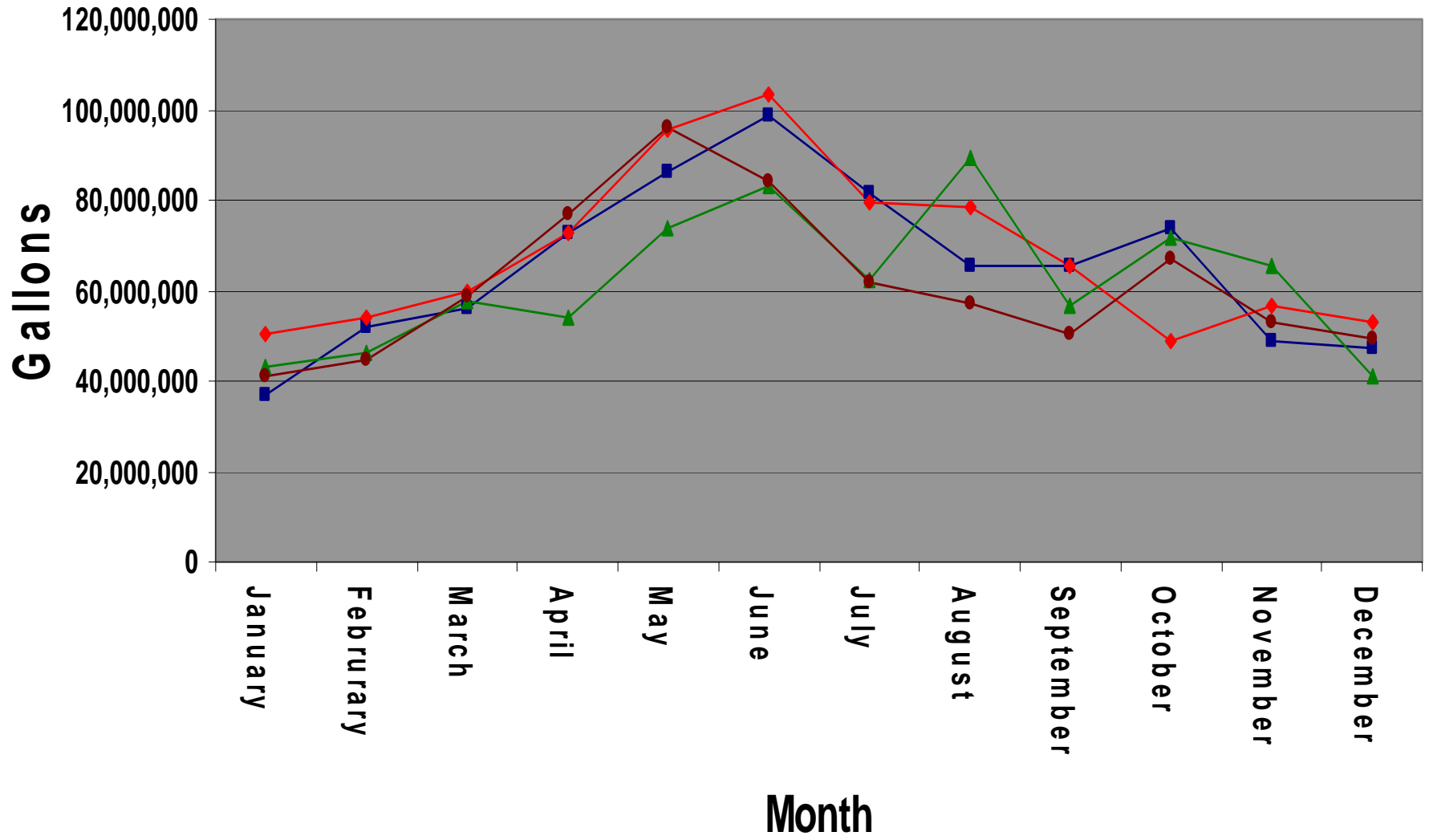
WATER PRODUCTION

	1999	2000	2001	2002	2003	2004	2005	2006	2007	2008	10-Year Ave
January	58,454,000	61,287,230	59,798,000	62,252,000	62,002,000	59,377,000	54,949,000	59,062,000	58,129,000	58,346,000	59,365,623
February	66,743,000	61,304,990	53,178,000	47,602,000	50,307,000	52,430,000	50,567,000	55,681,000	52,506,500	54,477,000	54,479,649
March	81,202,600	70,039,890	69,859,000	68,624,000	55,693,000	63,674,000	59,124,000	65,779,000	70,377,000	64,523,000	66,889,549
April	75,183,200	88,180,416	77,387,000	104,070,900	73,695,000	69,700,000	76,653,000	86,730,000	71,565,000	81,803,000	80,496,752
May	98,034,350	113,993,200	99,759,000	105,189,800	102,563,000	111,243,900	95,457,000	106,748,000	78,036,000	91,684,000	100,270,825
June	101,667,000	115,906,190	112,299,200	103,983,000	106,735,000	94,470,200	107,885,000	112,175,700	98,840,000	108,139,000	106,210,029
July	82,877,340	86,833,400	86,743,000	84,911,000	103,425,000	103,149,400	111,982,600	91,461,000	84,661,000	77,229,000	91,327,274
August	74,356,790	97,770,140	92,458,944	89,751,000	88,289,000	77,969,000	80,185,000	66,538,000	77,938,300	73,039,000	81,829,517
September	79,094,400	100,399,090	72,588,000	71,173,700	87,772,700	77,197,000	84,118,800	68,615,000	84,976,200	64,216,000	79,015,089
October	72,475,400	72,146,400	77,628,600	71,374,000	81,614,000	63,130,400	65,215,600	65,461,000	70,904,100	70,148,400	71,009,790
November	68,254,320	66,601,000	64,934,900	57,693,400	59,944,000	57,176,600	64,553,000	60,544,000	60,315,000	59,256,000	61,927,222
December	68,312,530	57,584,000	61,385,000	52,225,000	58,387,000	58,214,000	56,918,000	58,378,000	56,376,000	57,378,000	58,515,753
Total	926,654,930	992,045,946	928,018,644	918,849,800	930,426,700	887,731,500	907,608,000	897,172,700	864,624,100	860,238,400	911,337,072
Acre-Ft/Yr	2,843.99	3,044.69	2,848.18	2,820.04	2,855.57	2,724.53	2,785.16	2,753.14	2,653.23	2,639.80	2,796.61
% Rights Used	62.3%	66.7%	62.4%	61.8%	62.5%	59.7%	61.0%	60.3%	58.10%	57.80%	61.20%

Water Production per Year
2005, 2006, 2007, 2008

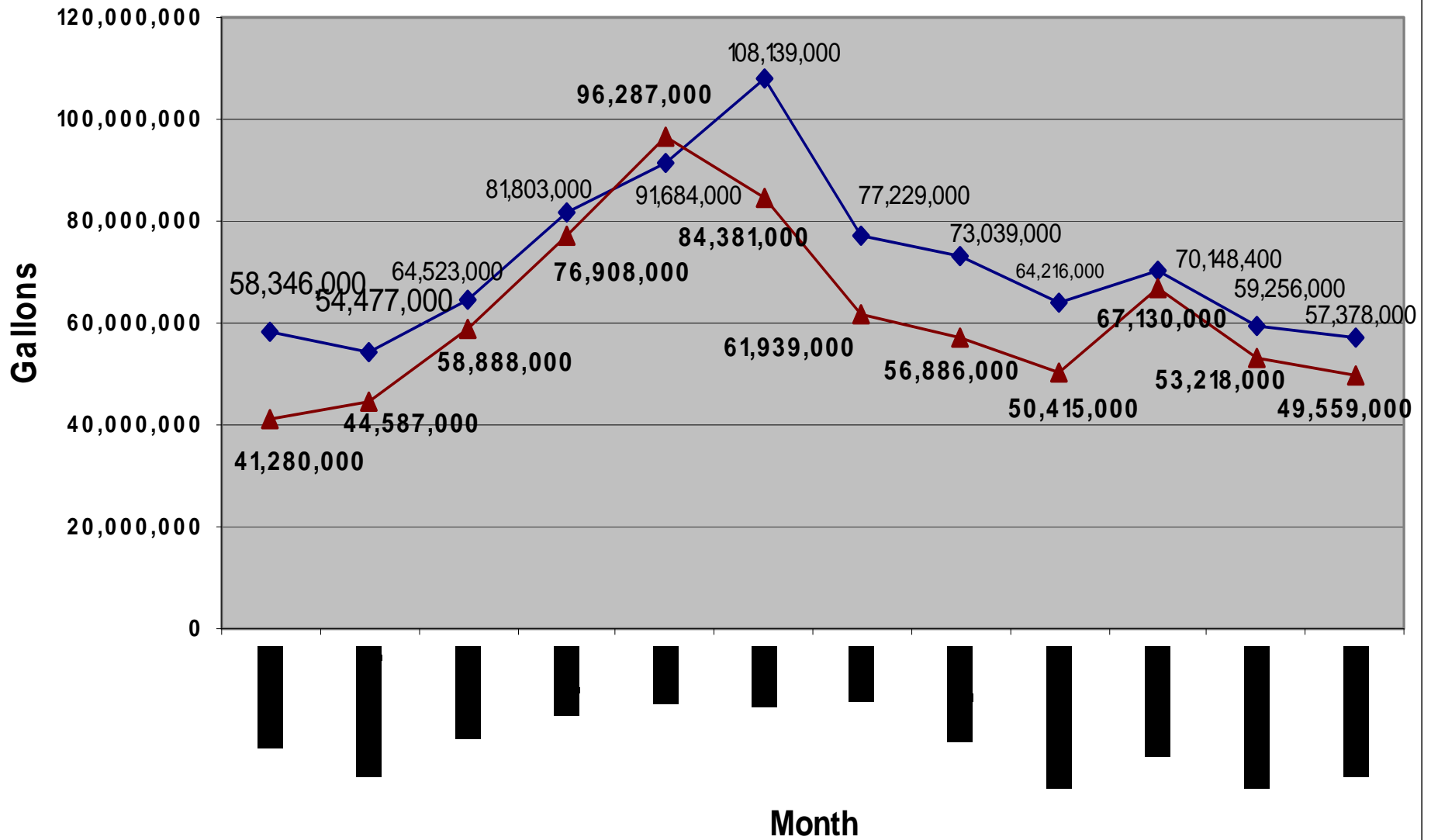


Water Billed per Year
2005, 2006, 2007, 2008

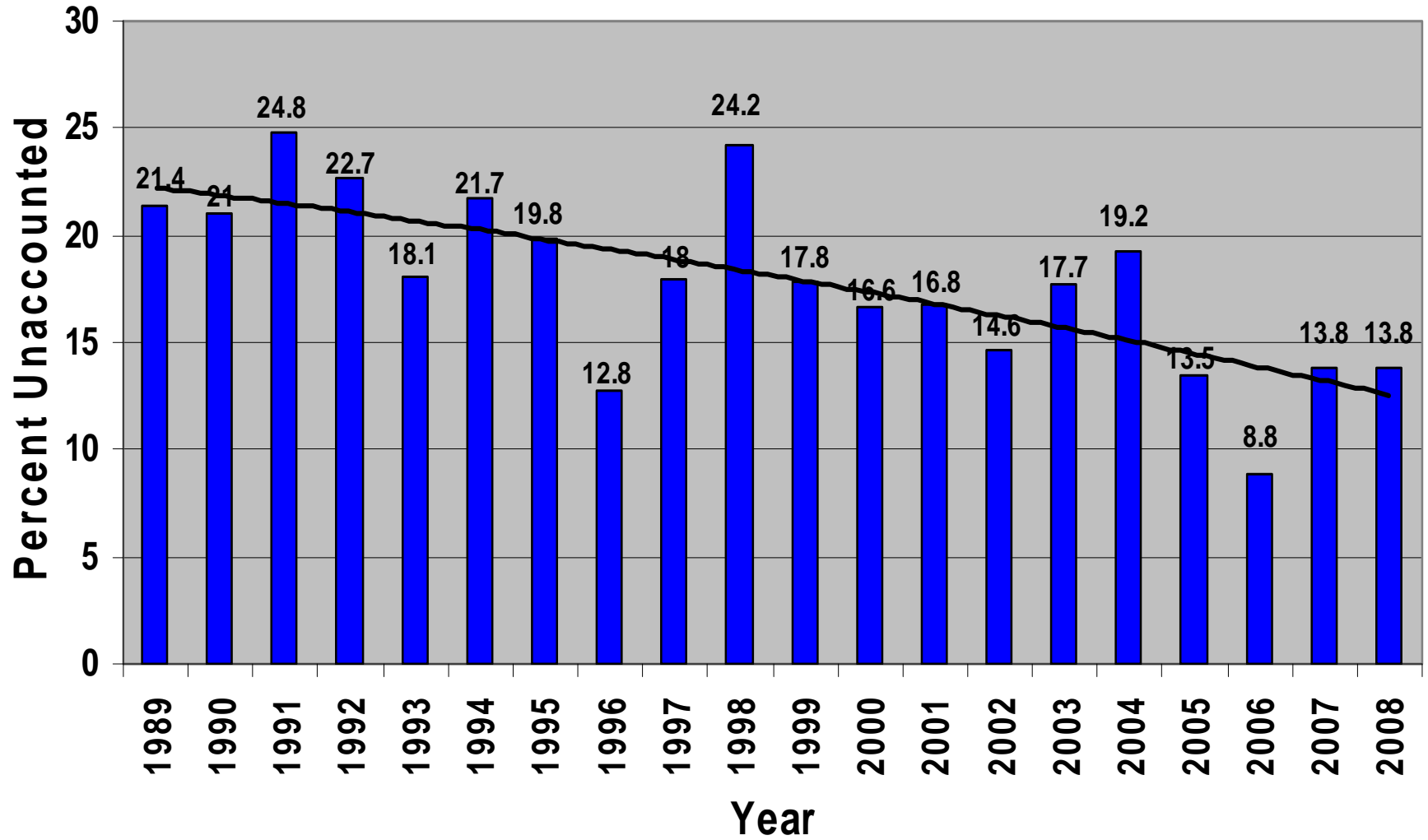


Unaccounted Water 2008

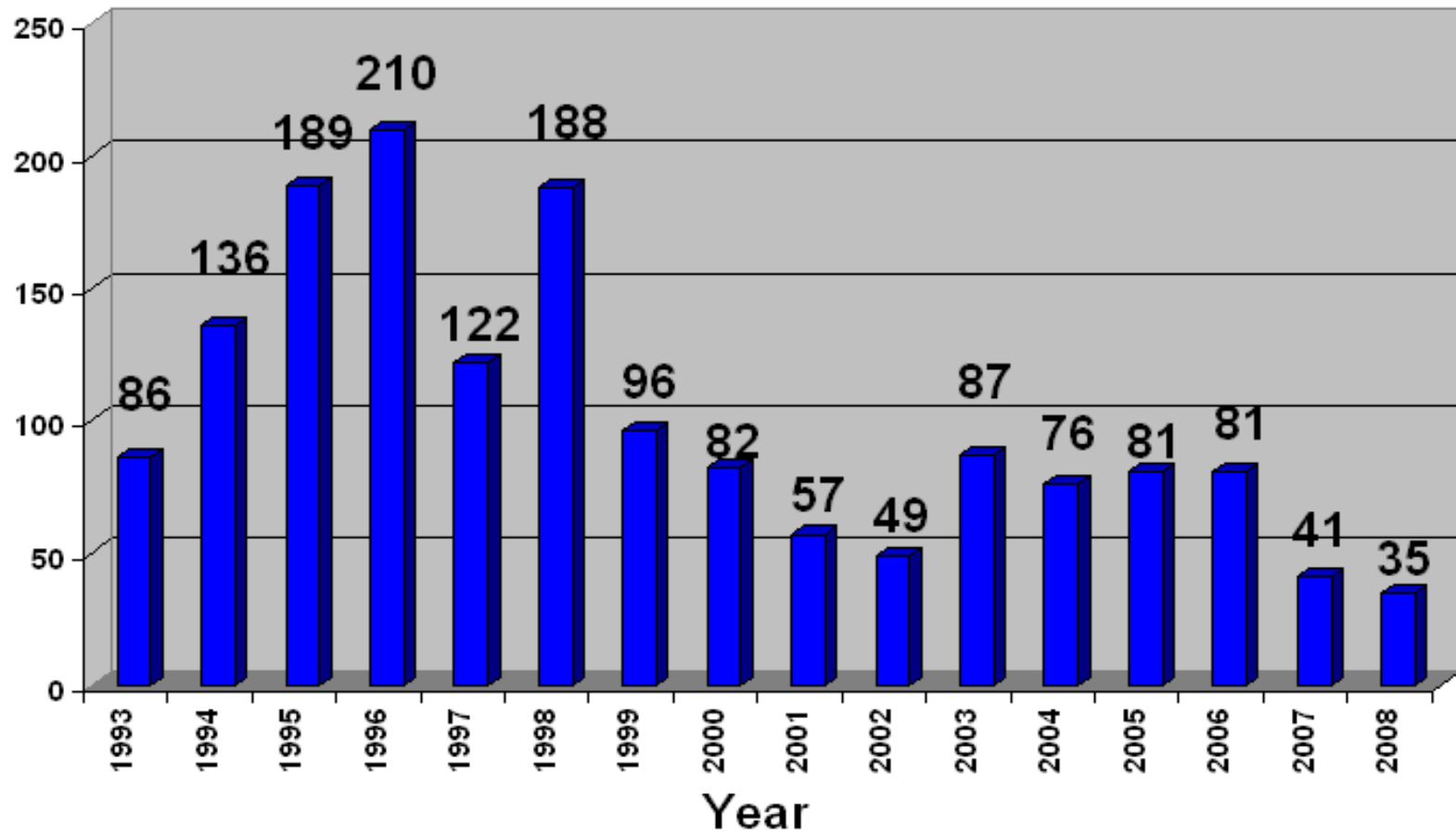
Pumped vs Billed



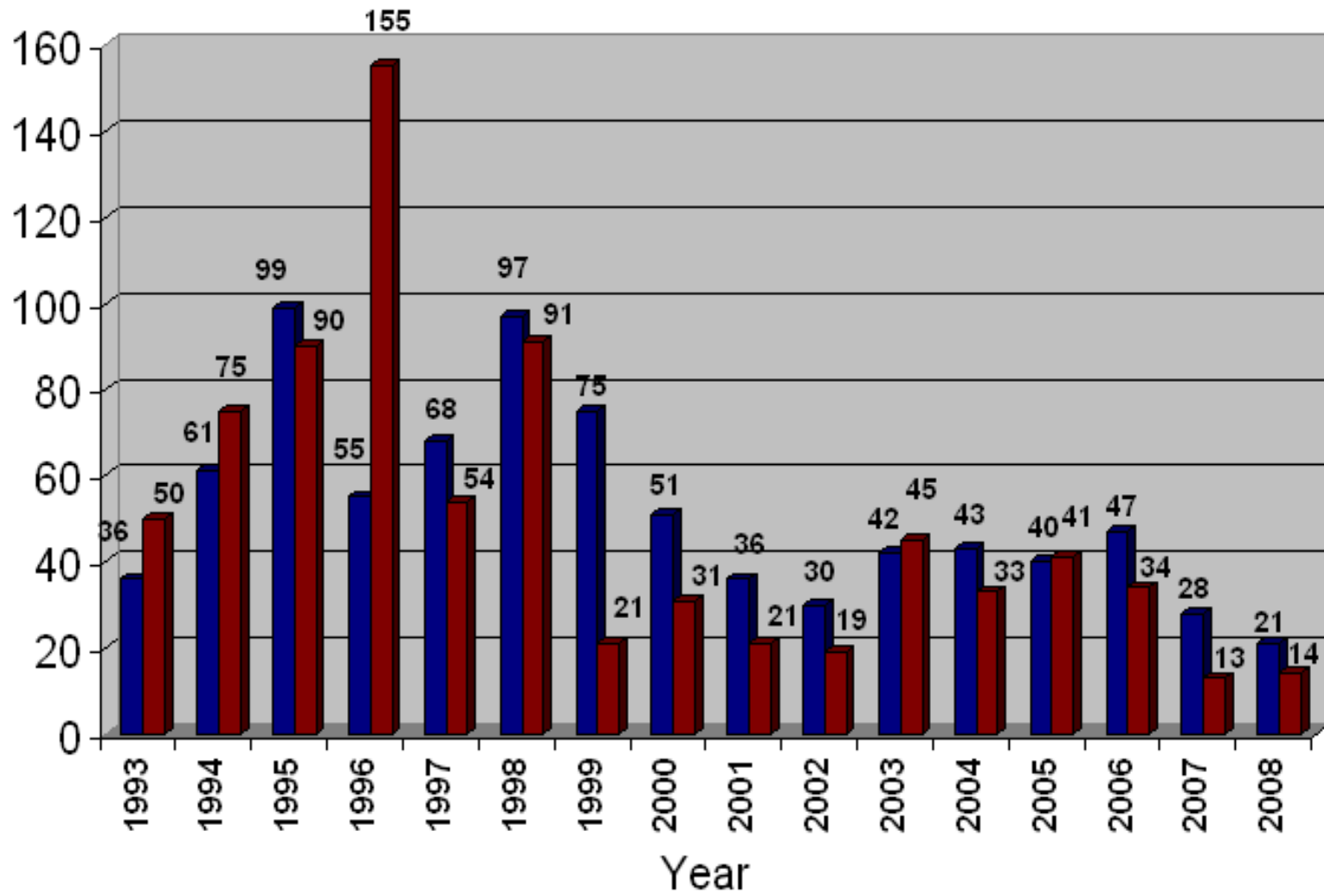
Unaccounted Water Percentage



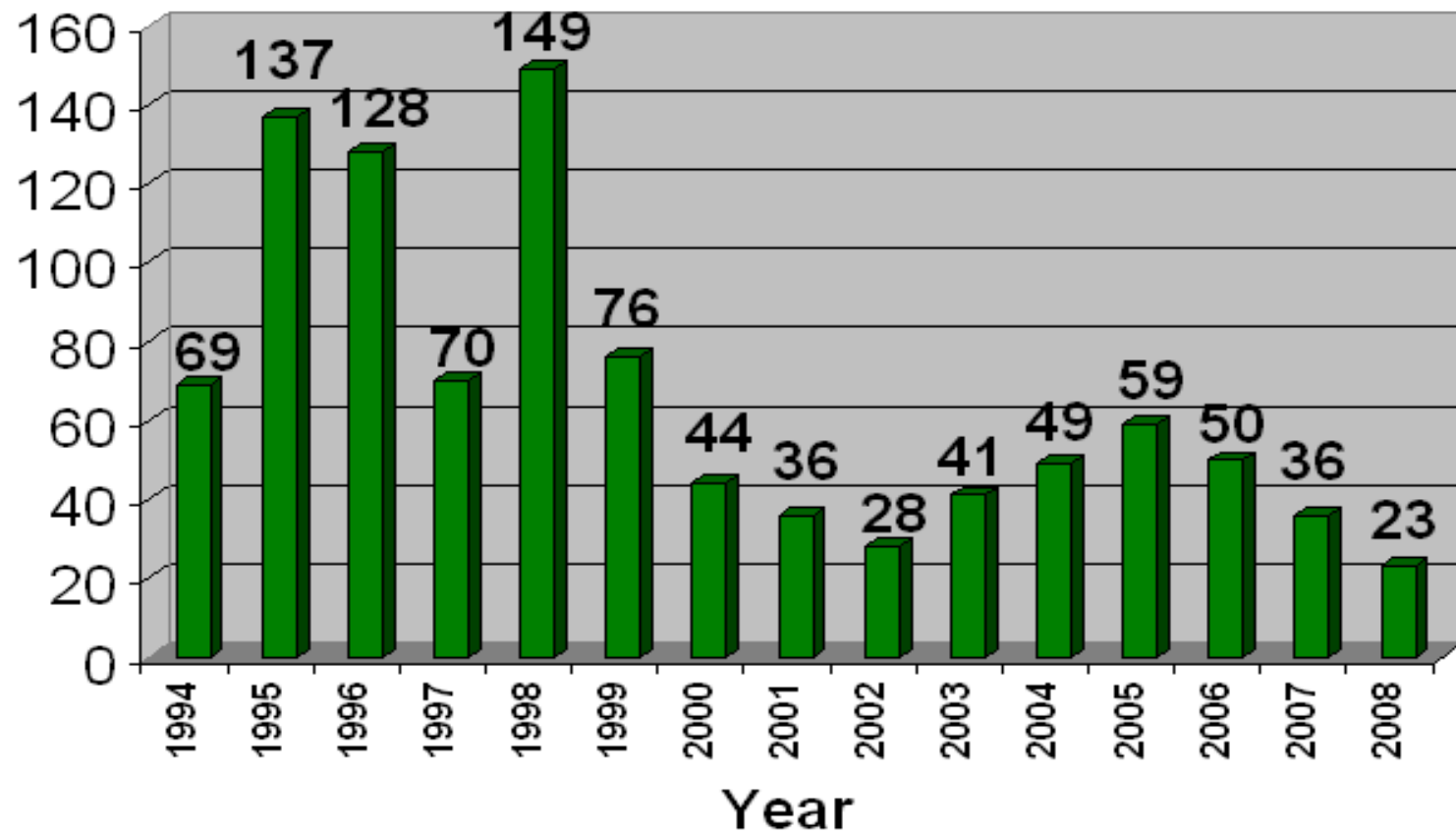
New Water Taps Per Year



Water Taps Per Year In-Town vs. Out-of-Town

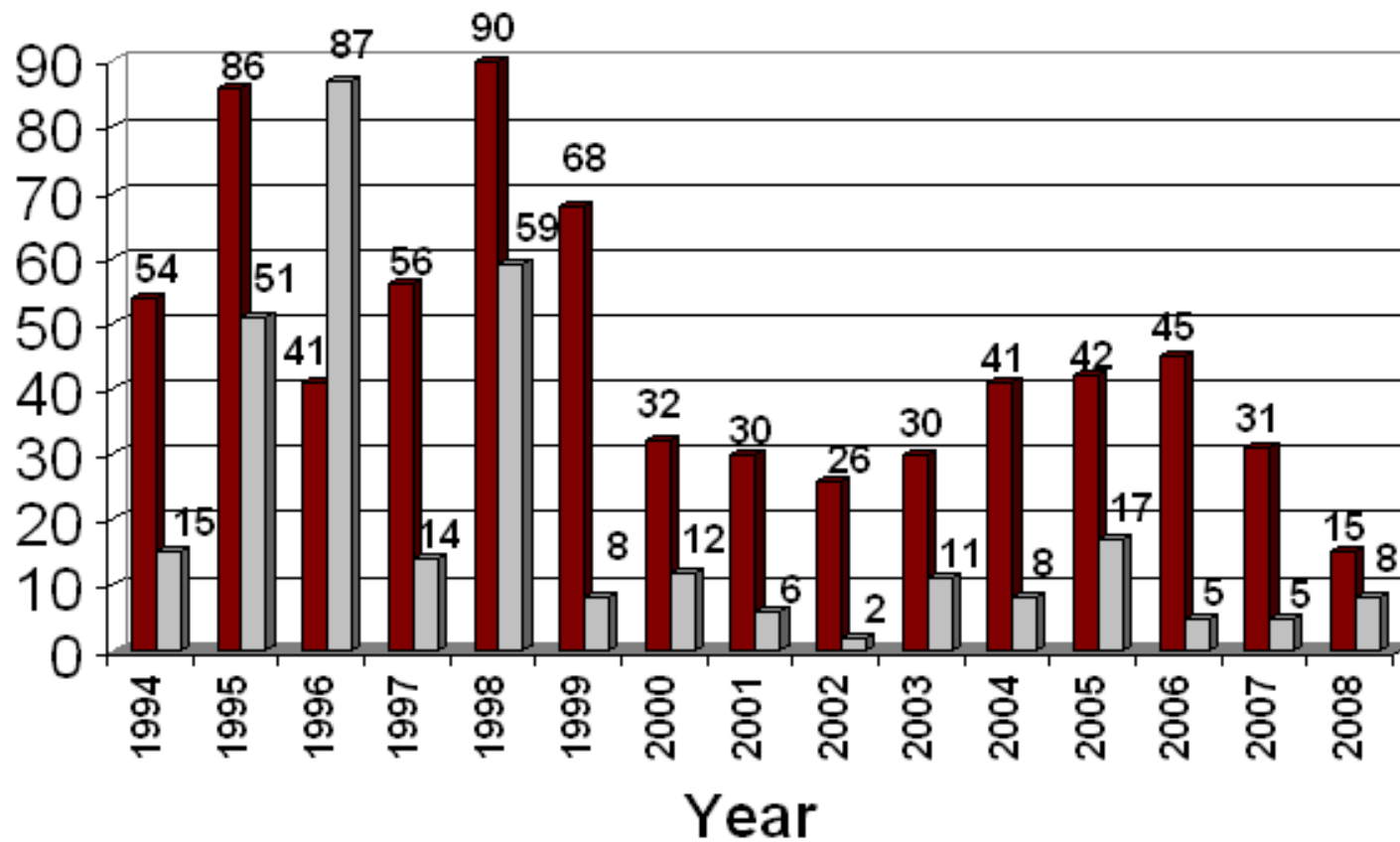


New Sewer Taps Per Year



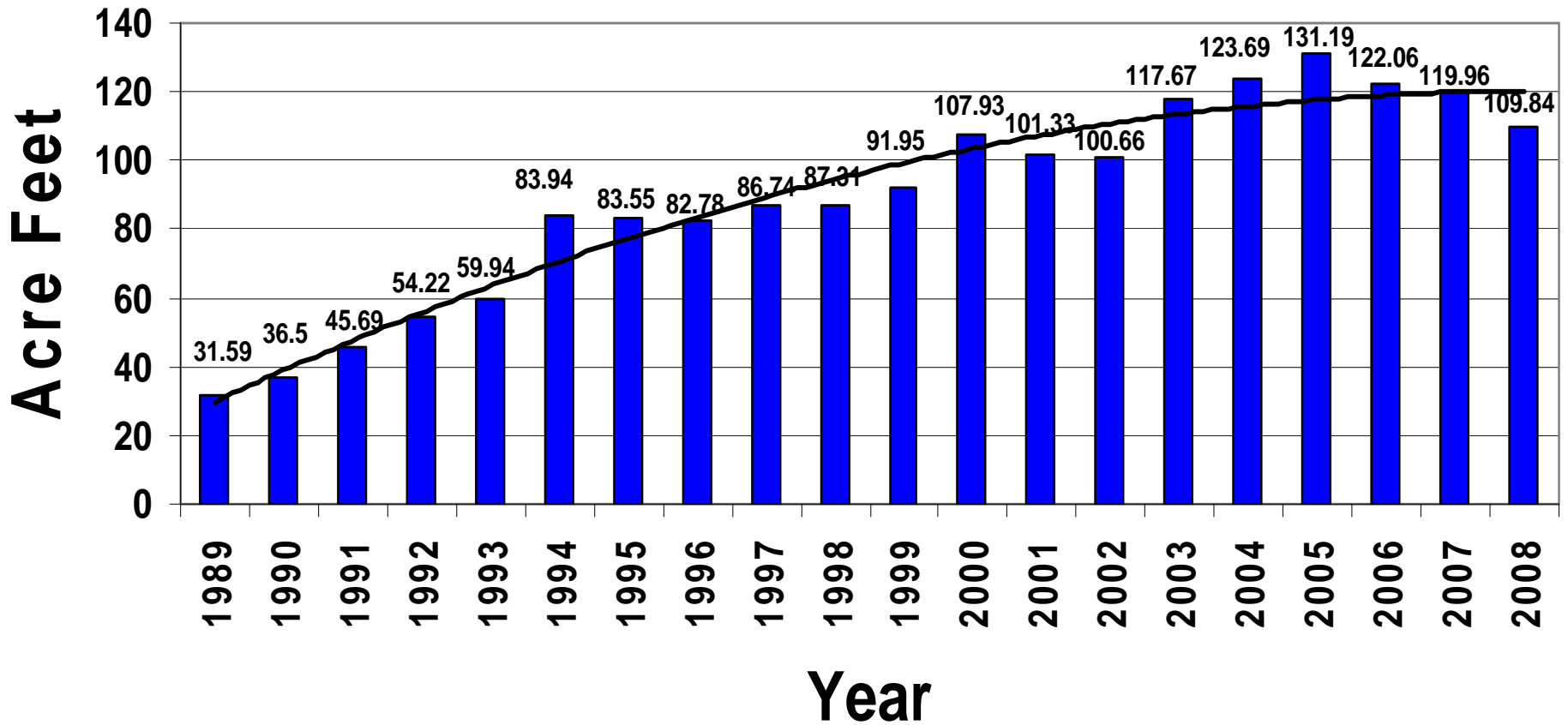
Sewer Taps Per Year

In-Town vs. **Out-of-Town**



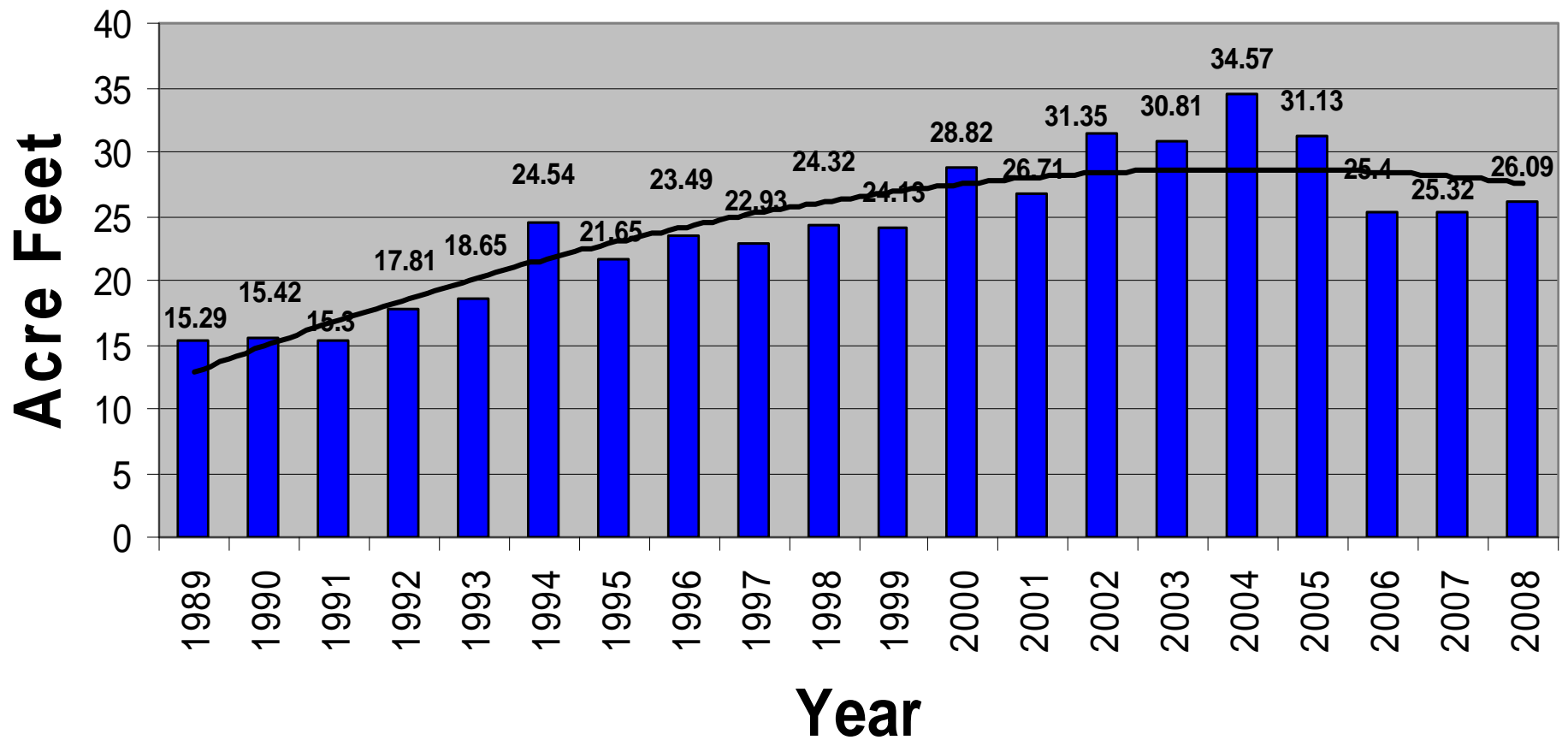
Arenas Valley Water Association Water Usage

Maximum Allowable = 200 ac-ft/yr



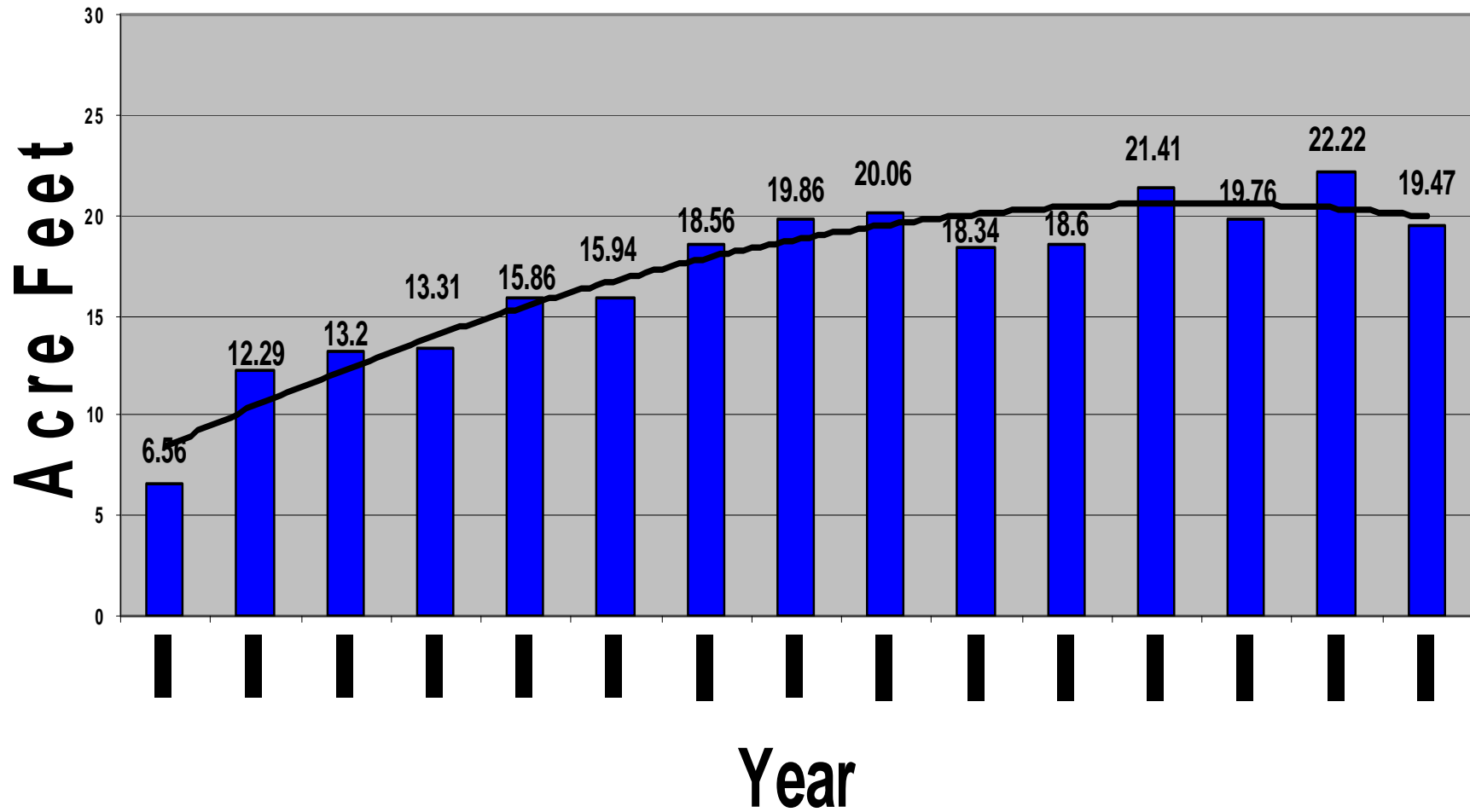
Pinos Altos Water Association Water Usage

Maximum Allowable = 75 ac-ft/yr



Rosedale Water Association Water Usage

Maximum Allowable = 25 ac-ft/yr



Tyrone Water Association Water Usage

